

Limit value switches

Inductive contacts
triple

DN

100

Type code

Type

Inductive contact

I-

Available switching functions

pointer moving clockwise

Make-contact



1

Break-contact



2

111

112

121

122

211

212

221

222

Attention

With triple inductive contacts DN 100 equipped with SJ 2 slot sensors, only 2 contacts (set pointers) may be adjusted to switch simultaneously. The third connected contact is, in fact, connected at a distance of 30° to the right or left.

When an order is placed, marking of the connected contact is absolutely required. It will be indicated by a full stop in the type code as per this example:

I - 1.11 (first contact connected at the left)

or

I - 11.1 (third contact connected at the right)

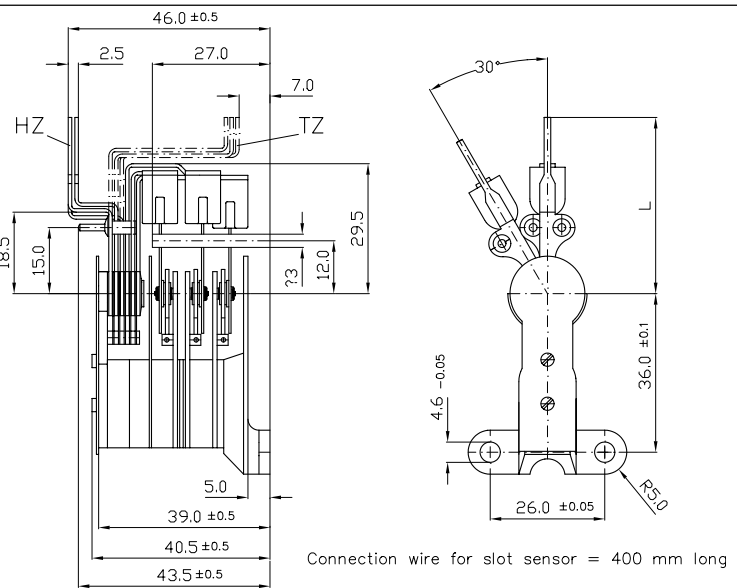
Recommended amplifiers

WE 77/Ex1  **+WE 77/Ex2** 
intrinsically safe

(re. catalogue group K 12)

MSR 010-I + MSR 020-I
not intrinsically safe

(re. catalogue group K 11)



Required order information

Nominal size	DN 100
Type	re. type code
Set pointer	HZ (contact fitted below the dial) TZ (contact fitted on the dial)
Pointer length "L"	40 mm for DN 100 66 mm for DN 100-160
Connection (re. page K 14-10.030)	connection wire (0.06 mm ²) 400 mm long
Hair springs (re. page K 14-20.011)	normal light
Slot sensor (re. page K 03-00.030) (re. page K 03-00.040) (re. page K 03-00.035)	SJ 2 N SJ 2 SN limited working range SJ 2 S1N (reversed switching behavior) Si2-K08-Y1
Contact base (re. page K 14-10.040)	base B - plastic (36 mm) base A - plastic (25 mm)

Special executions available on request

Additional information

Description / technical data	Page
Inductive contacts	K 03-00.010
Explosion protection (general)	K 14-30.010
Fail safe technology	K 14-30.020
Circuit diagrams / self-adhesive labels	K 14-10.020
Terminal configuration	K 14-10.035
Fitting, adjusting, dial mounting	K 14-10.040
Limit value switches immersed in oil	K 14-20.020

	K-group
Accessories	K 13