



<b>Limit value switches</b> <b>Electronic contacts</b> <b>triple</b>	<b>DN</b>  <b>160</b>
--	-----------------------------

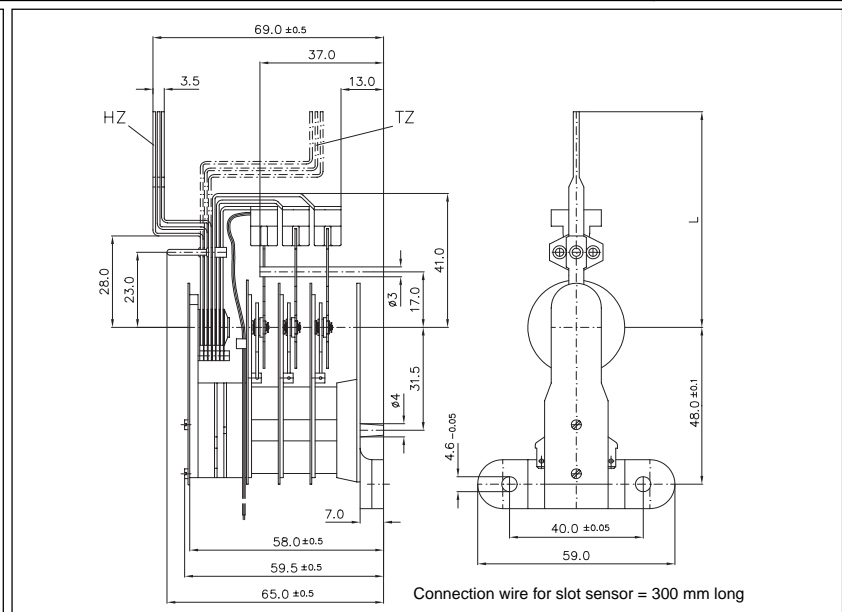
**Type code**

**Type**  
Electronic contact

**E-**

<b>Available switching functions</b>	<b>111</b>
pointer moving clockwise	<b>112</b>
<b>Make-contact</b> 	<b>1</b>
<b>Break-contact</b> 	<b>2</b>

111  
112  
121  
122  
211  
212  
221  
222



<b>Required order information</b>	
Nominal size	DN 160
Type	re. type code
Set pointer	HZ (contact fitted below the dial) TZ (contact fitted on the dial)
Pointer length "L"	66 mm for DN 160 105 mm for DN 160-250
Connection (re. page K 14-10.030)	connection wire (0.08 mm <sup>2</sup> ) 300 mm long
Hair springs (re. page K 14-20.011)	normal light
Slot sensor	Si 2-K08-AP6 (3-wire) (re. page K 04-00.030)  Si 2-K08-AG6 (2-wire) (re. page K 04-00.035)
Contact base	plastic metal
Special executions available on request	

<b>Additional information</b>	
Description / technical data	Page
Electronic contacts _____	K 04-00.010
Circuit diagrams / self-adhesive labels _____	K 14-10.020
Terminal configuration _____	K 14-10.035
Fitting, adjusting, dial mounting _____	K 14-10.040
Limit value switches immersed in oil _____	K 14-20.020
	<b>K-group</b>
Accessories _____	K 13

08.2002 Errors excepted. Subject to alteration without notice.