

# Limit value switches in a modular system

standard, with PG 9 cable gland

Low-action and snap-action contact  
double, 2 separate circuits

DN 160

DN 6"

## Type code

### Type

Low-action contact  
without magnet holder

S-

### Type

Low-action contact  
with magnet holder

Kombi S-



### Type

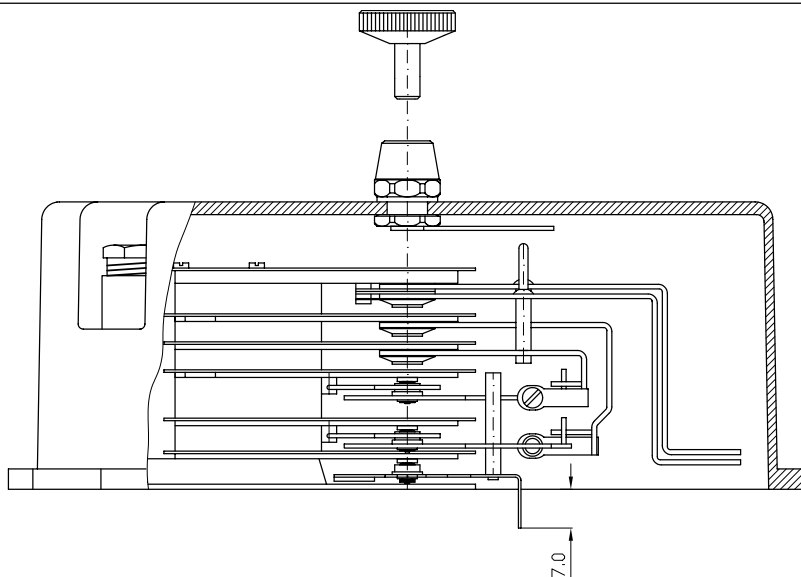
Snap-action contact  
with screwed-in magnets

Kombi M-

Available switching functions  
pointer moving clockwise

11  
12

Make-contact 	1	21
Break-contact 	2	22



Dimensions re. page K 13-30.035

## Required order information

Nominal size	DN 160 DN 6"
Type	re. type code
Set pointer	TZ (contact fixed in the hood)
Execution	modular system standard 2 separate circuits
Connection (re. page K 14-10.030)	solder terminal (brass nickel-plated)
Hair spring (re. page K 14-20.010)	normal light
Contact material (re. page K 02-00.030)	silver nickel, gold-plated silver palladium silver palladium, gold-plated gold silver platinum iridium
Hood diameter	Art. No.: (re. schedule)

DN	∅	Art. No.
160	158.0	1000341
6"	151.5	1000340

Special executions available on request

## Additional information

Description / technical data

	Page
General (modular system standard) _____	K 06-00.010
Low-action contacts _____	K 02-00.010
Snap-action contacts _____	K 02-00.020
Load table _____	K 14-10.010
Circuit diagrams / self-adhesive labels _____	K 14-10.020
Terminal configuration _____	K 14-10.032
Fitting, adjusting _____	K 14-10.040
Sealing and adapting rings _____	K 13-30.040

	K-group
Accessories _____	K 13
Limit value switches immersed in oil _____	K 07

## Recommended amplifiers

Our **MSR 020** switching amplifier does not require any separate electric circuits, as **two separate** potential free changers are already installed in the output.

(re. catalogue group K 11)