

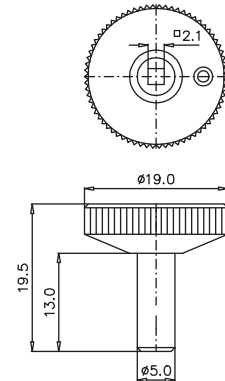
Adjusting keys

Adjusting key

Execution: fully made of plastic

Material: polyamide 40% GV

Art. No.: 1000000

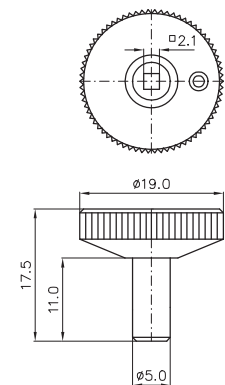


Adjusting key (standard-type)

Execution: with metal shaft

Material: knob: polyamide 6, 40% GV
shaft: brass nickel-plated

Art. No.: 1000001

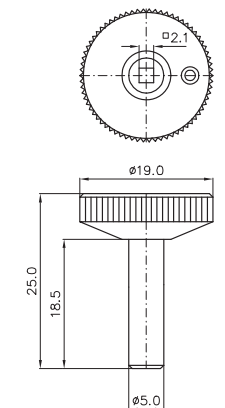


Adjusting key

Execution: with long metal shaft
(for double movement)

Material: knob: polyamide 6, 40% GV
shaft: brass nickel-plated

Art. No.: 1000002



Security tagging cap

Execution: for locks, maximum pointer - and index pointer sets

Material: Polycarbonate, clear

Art. No.: 1010027

