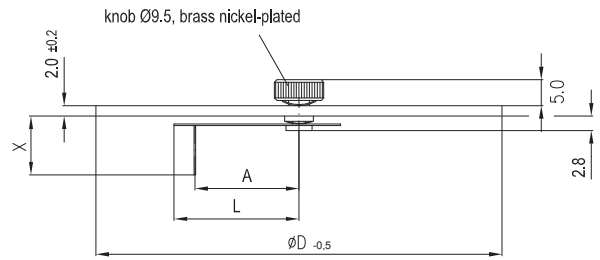


Windows with maximum pointer

DN
63 - 160

Window made of glass with maximum pointer with fixed key

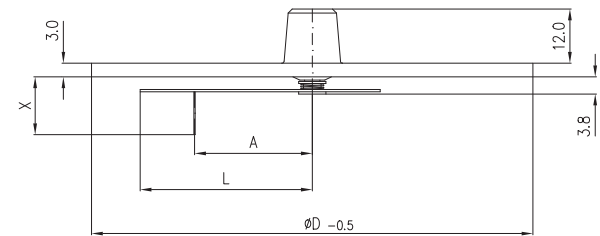
DN	Ø D	Art. No.	X
63	61.5	1000325	12.8
80	78.0	1000326	11.0



Window material: glass

Window with maximum pointer without key -oiltight IP 67-

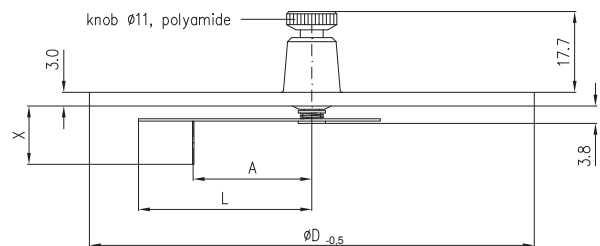
DN	Ø D	Art. No.	X
63	60.0	1000243	14.3
	61.8	1000244	14.3
80	74.2	1000246	12.5
	78.0	1000247	12.5
100	94.2	1000249	14.3
	95.9	1000250	14.3
	98.4	1000251	14.3
160	153.9	1000255	14.3
	155.3	1000256	14.3
	158.0	1000257	14.3



Window material: polycarbonate, transparent

Window with maximum pointer with fixed key -oiltight IP 67-

DN	Ø D	Art. No.	X
63	60.0	1000259	14.3
	61.8	1000260	14.3
80	74.2	1000262	12.5
	78.0	1000263	12.5
100	94.2	1000265	14.3
	95.9	1000266	14.3
	98.4	1000267	14.3
160	153.9	1000271	14.3
	155.3	1000272	14.3
	158.0	1000273	14.3



Window material: polycarbonate, transparent

Accessories

Adjusting keys (re. catalogue page K 13-10.010)

Special executions available on request

e. g.:

- Window thickness 4 mm (polycarbonate)
- Special diameter

Table of dimensions

DN	A	L
63	17.1	24.5
80	18.5	28.5
100	26.0	38.0
160	55.0	65.0